

# **Our Community, Our Health**

## **Inaugural Conference**

**October 29, 2009**

**Emerson Center at Harris-Stowe State University**

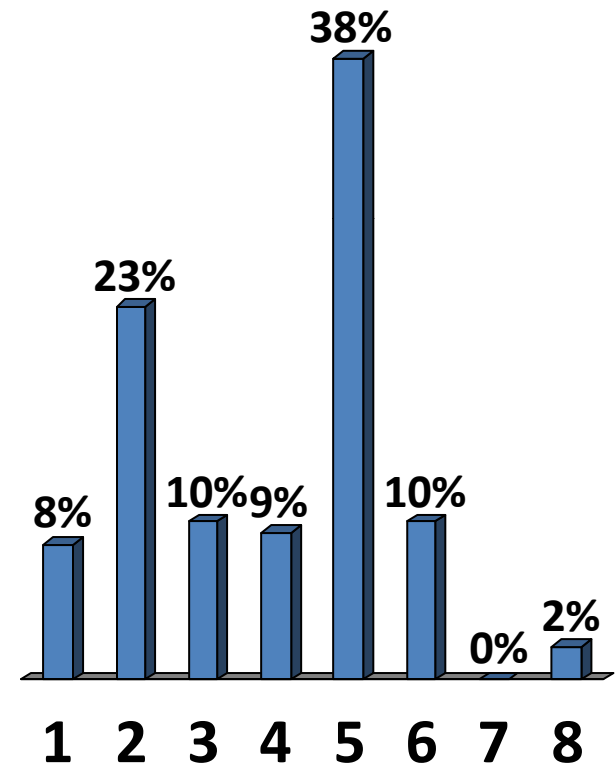
**Community-Academic Partnerships to  
Reduce Health Disparities in St. Louis**

**Interactive Survey Results**

**149 Participants**

# How would you best identify yourself?

1. Community Member
2. Community Organization Representative
3. Health Care Provider
4. Government or Policy Representative
5. Academic
6. Student
7. Business Owner
8. Religious Leader

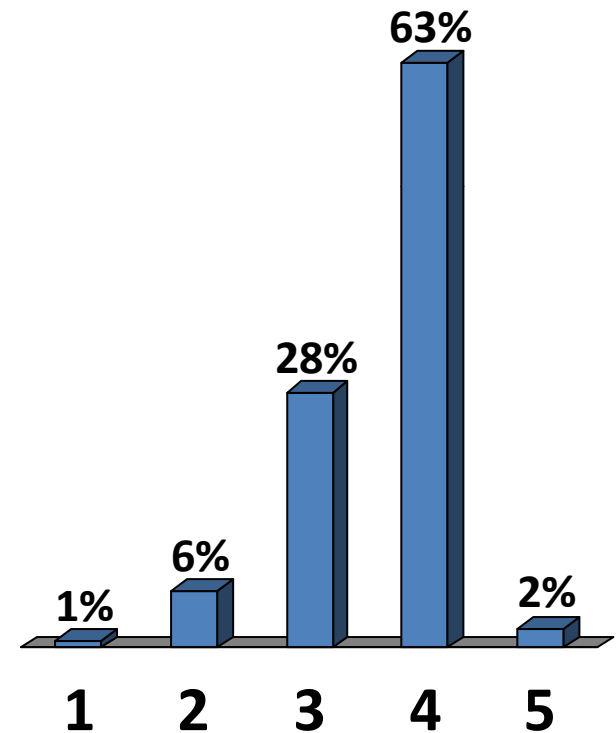


# **What impact do the following have on health conditions in African Americans and other minorities in St. Louis?**

1. = No Impact
2. = Only a Little Impact
3. = A Fair Amount of Impact
4. = A Lot of Impact
5. = Not Sure

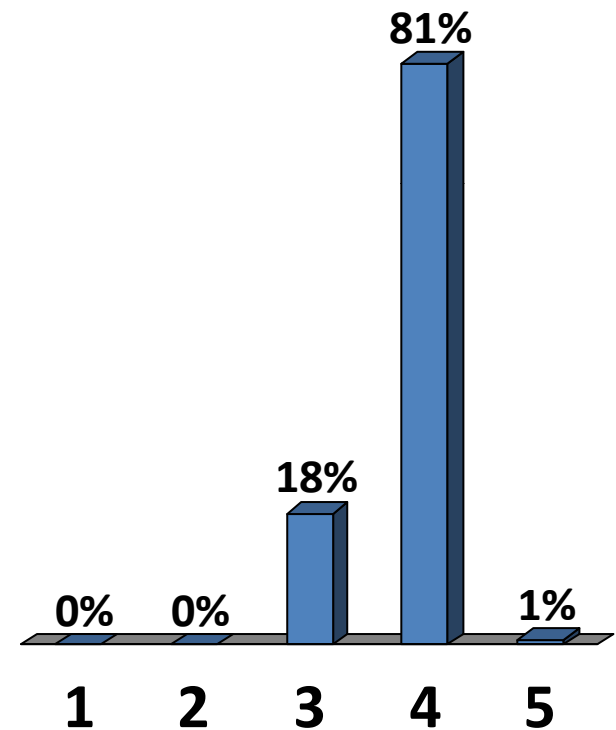
# Health Beliefs

1. = No Impact
2. = Only a Little Impact
3. = A Fair Amount of Impact
4. = A Lot of Impact
5. = Not Sure



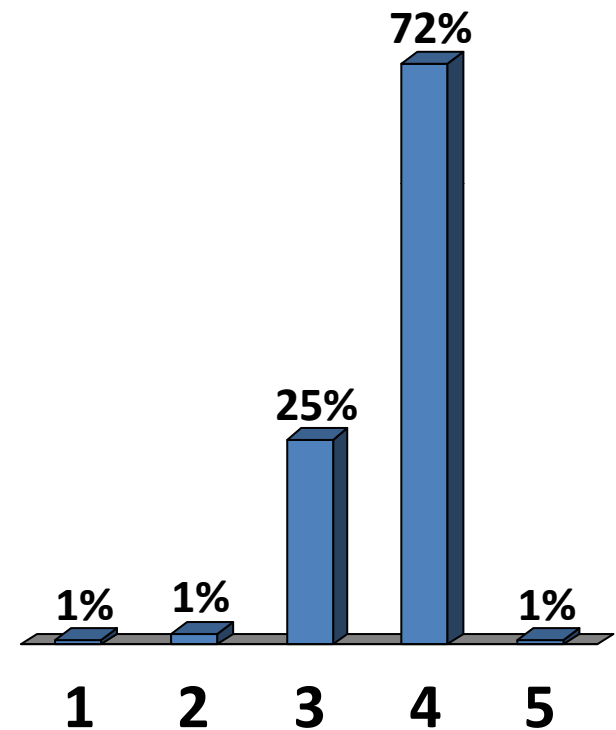
## Life Skills and Behaviors

1. = No Impact
2. = Only a Little Impact
3. = A Fair Amount of Impact
4. = A Lot of Impact
5. = Not Sure



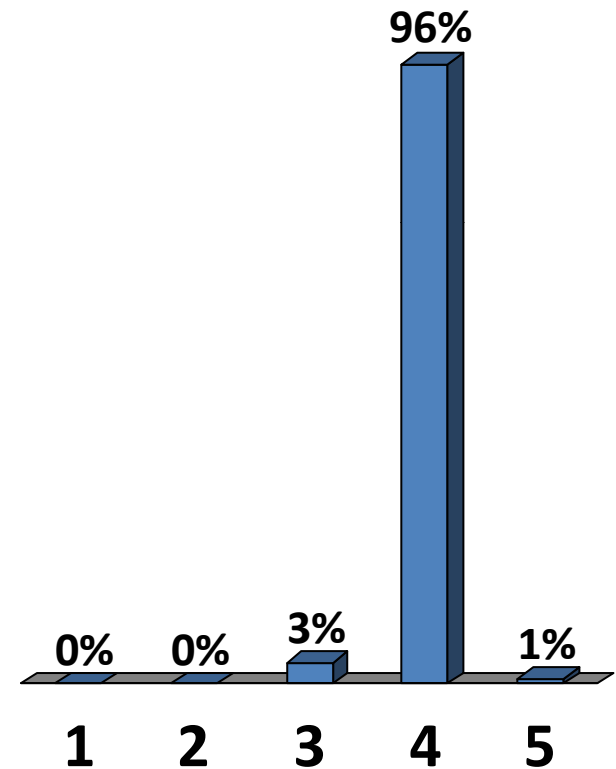
# Education

1. = No Impact
2. = Only a Little Impact
3. = A Fair Amount of Impact
4. = A Lot of Impact
5. = Not Sure



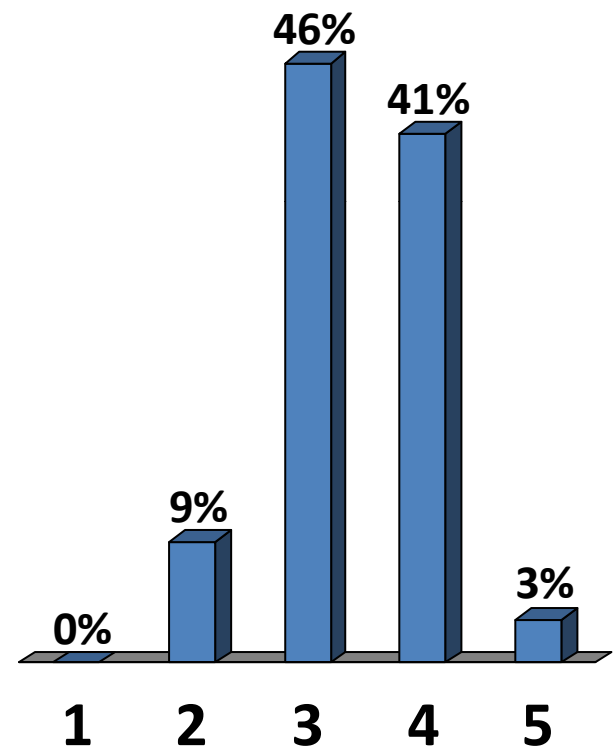
# Poverty

1. = No Impact
2. = Only a Little Impact
3. = A Fair Amount of Impact
4. = A Lot of Impact
5. = Not Sure



# Social Support Networks

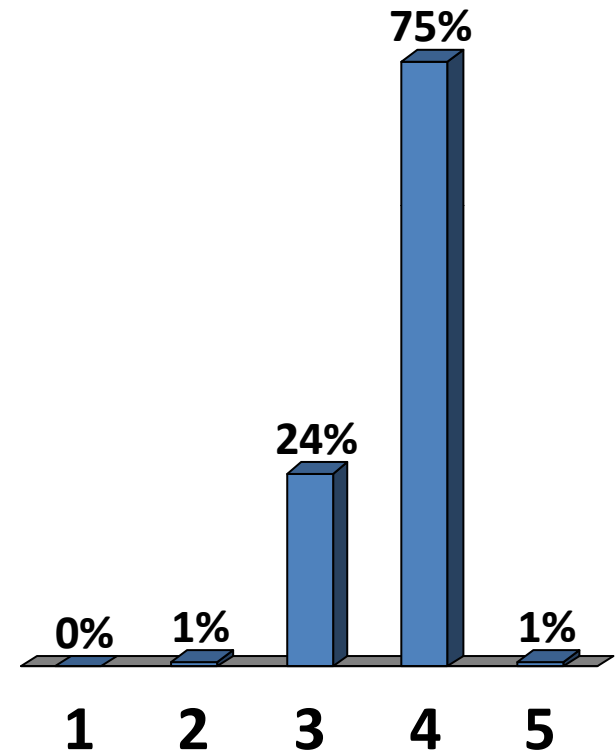
1. = No Impact
2. = Only a Little Impact
3. = A Fair Amount of Impact
4. = A Lot of Impact
5. = Not Sure





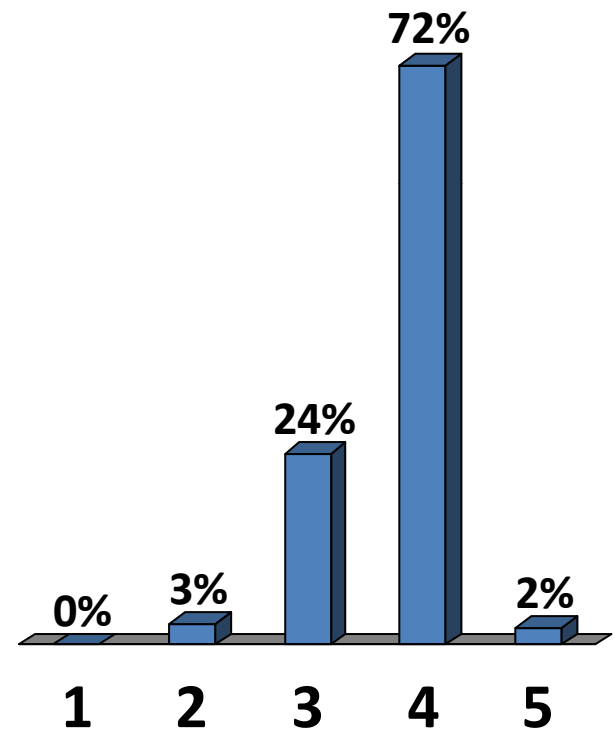
# Employment and Working Conditions

1. = No Impact
2. = Only a Little Impact
3. = A Fair Amount of Impact
4. = A Lot of Impact
5. = Not Sure



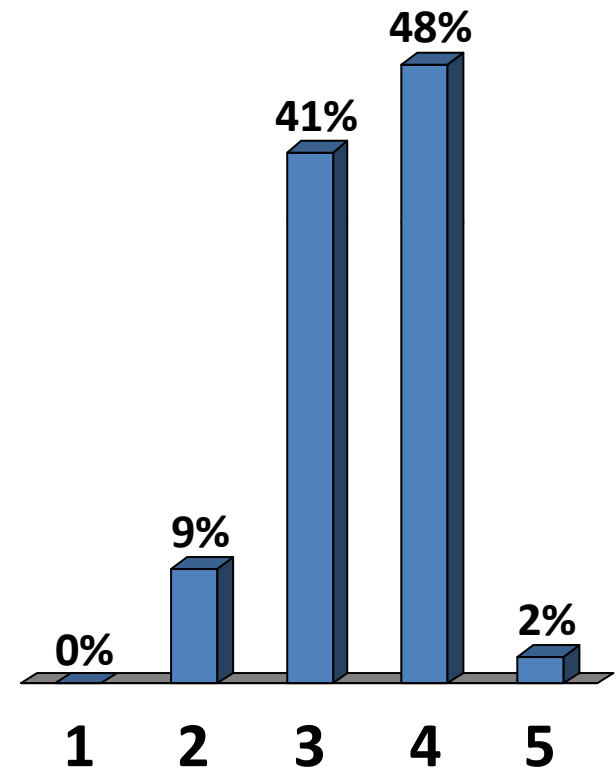
# Access to Health Services

1. = No Impact
2. = Only a Little Impact
3. = A Fair Amount of Impact
4. = A Lot of Impact
5. = Not Sure



# The Physical Environment

1. = No Impact
2. = Only a Little Impact
3. = A Fair Amount of Impact
4. = A Lot of Impact
5. = Not Sure



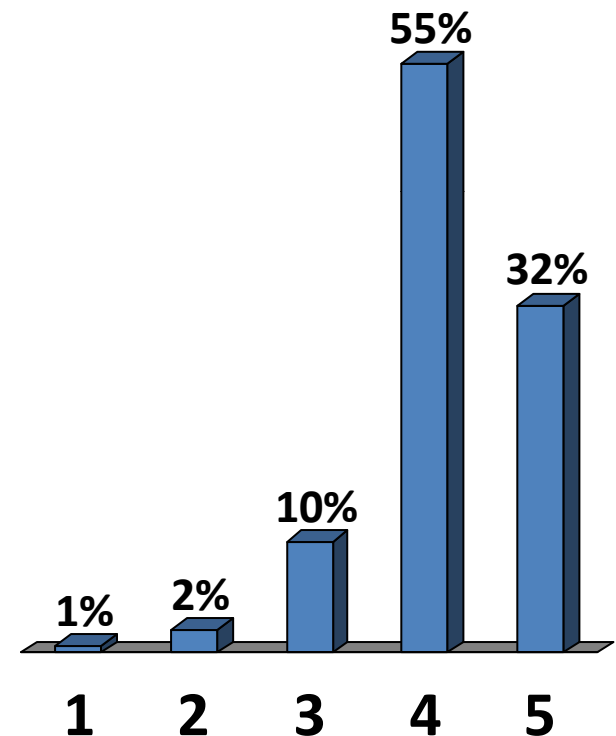
# **What level of priority would you give to research about the following health problems?**

## **Response Options Will Be:**

1. = Lowest Priority
2. = Some Priority
3. = Moderate Priority
4. = High Priority
5. = Highest Priority

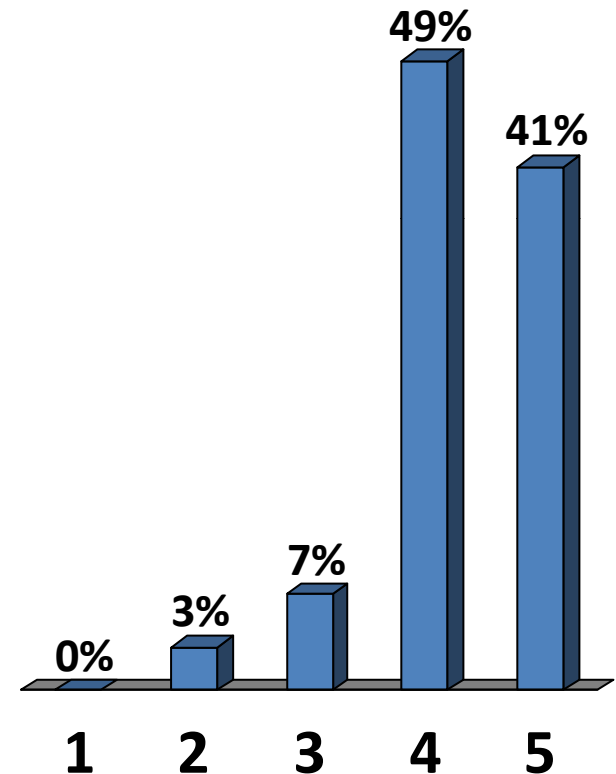
# Heart Disease, High Blood Pressure, Stroke among African Americans and other minorities in St. Louis

1. = Lowest Priority
2. = Some Priority
3. = Moderate Priority
4. = High Priority
5. = Highest Priority



# Diabetes among African Americans and other minorities in St. Louis

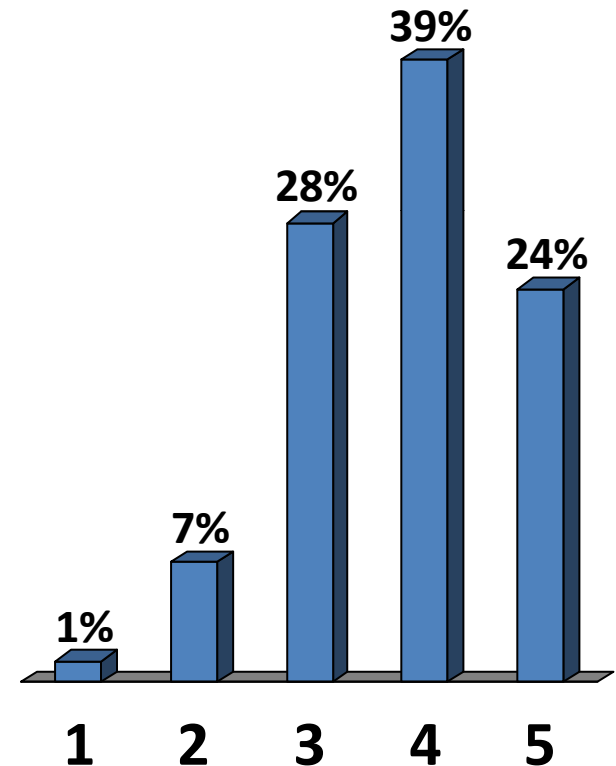
1. = Lowest Priority
2. = Some Priority
3. = Moderate Priority
4. = High Priority
5. = Highest Priority



# AIDS

## among African Americans and other minorities in St. Louis

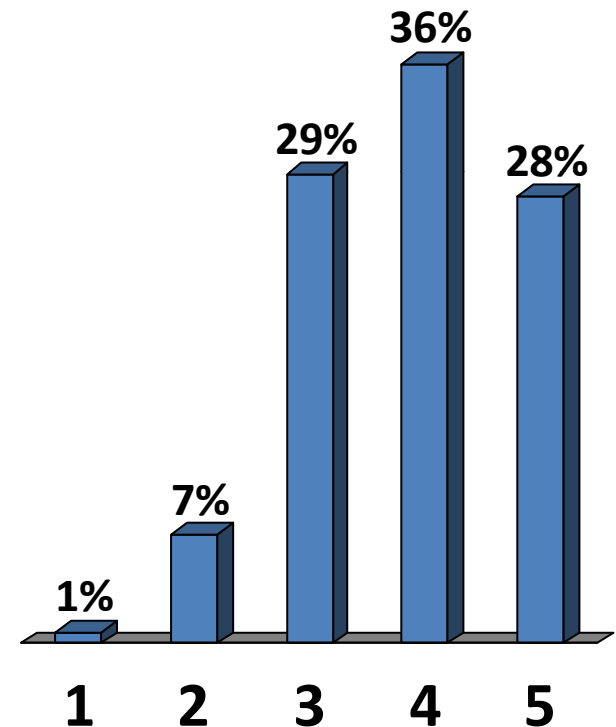
1. = Lowest Priority
2. = Some Priority
3. = Moderate Priority
4. = High Priority
5. = Highest Priority



# Sexually Transmitted Diseases (STDs)

## among African Americans and other minorities in St. Louis

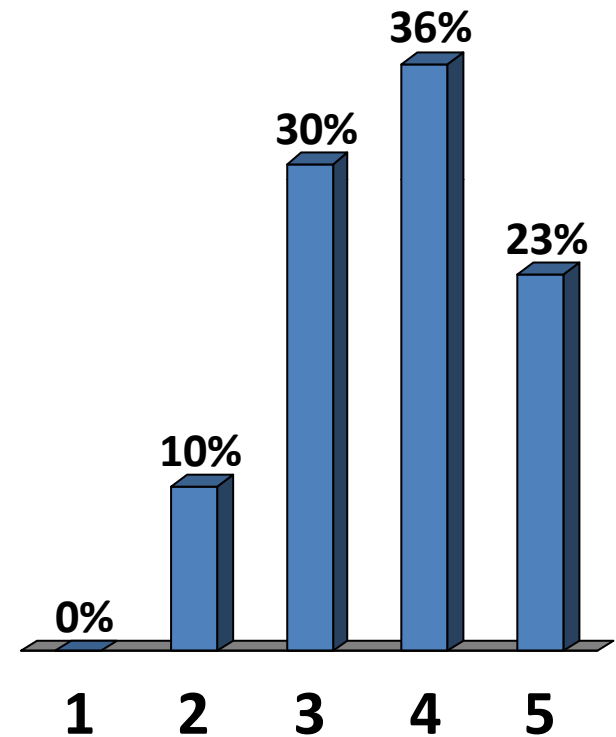
1. = Lowest Priority
2. = Some Priority
3. = Moderate Priority
4. = High Priority
5. = Highest Priority





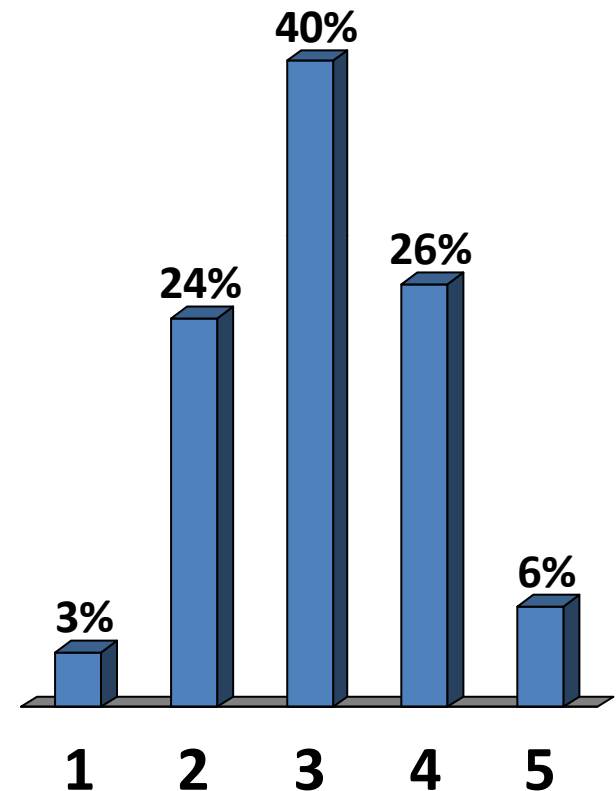
# Cancer among African Americans and other minorities in St. Louis

1. = Lowest Priority
2. = Some Priority
3. = Moderate Priority
4. = High Priority
5. = Highest Priority



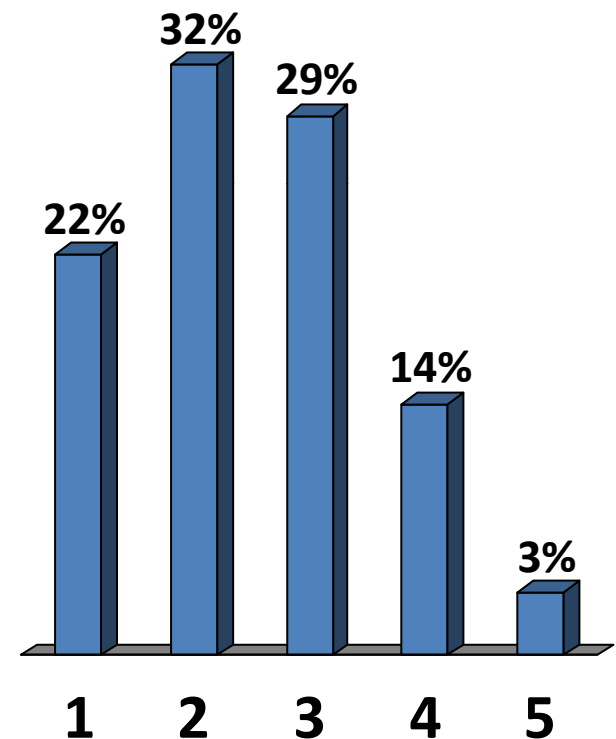
# Chronic Lung Disease among African Americans and other minorities in St. Louis

1. = Lowest Priority
2. = Some Priority
3. = Moderate Priority
4. = High Priority
5. = Highest Priority



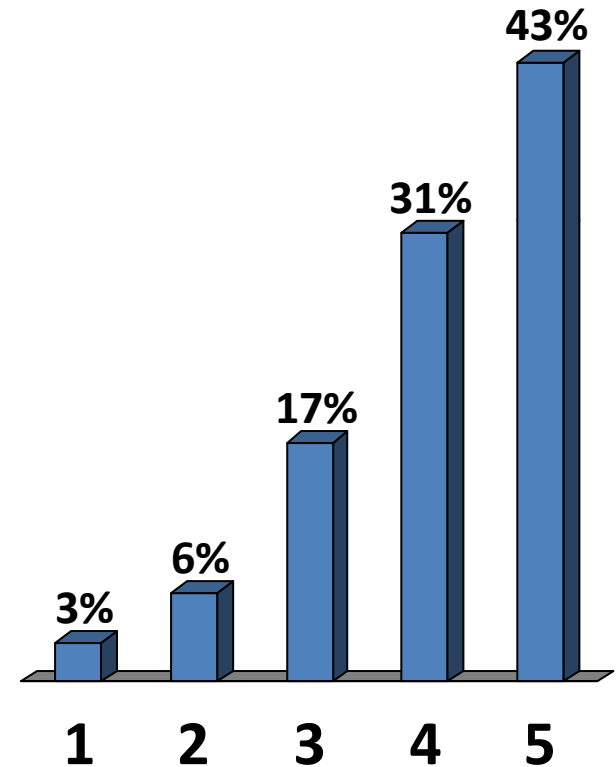
# Flu and Pneumonia among African Americans and other minorities in St. Louis

1. = Lowest Priority
2. = Some Priority
3. = Moderate Priority
4. = High Priority
5. = Highest Priority



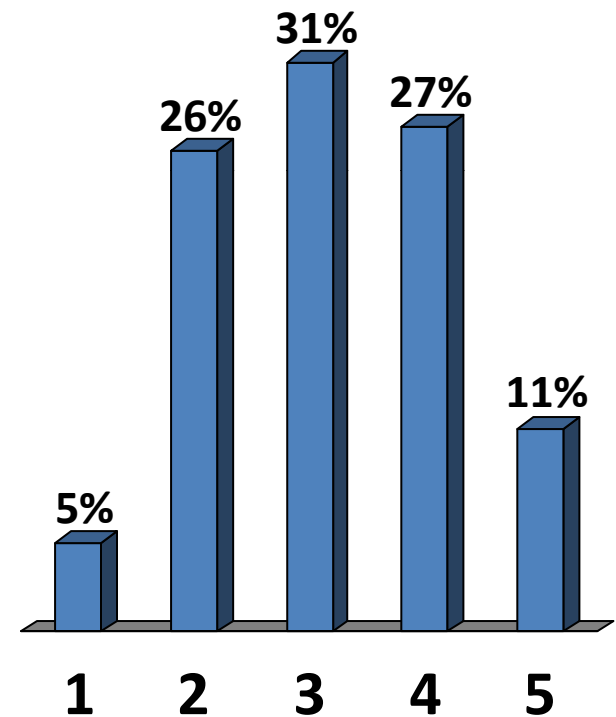
# Homicide among African Americans and other minorities in St. Louis

1. = Lowest Priority
2. = Some Priority
3. = Moderate Priority
4. = High Priority
5. = Highest Priority



# Kidney Disease among African Americans and other minorities in St. Louis

1. = Lowest Priority
2. = Some Priority
3. = Moderate Priority
4. = High Priority
5. = Highest Priority



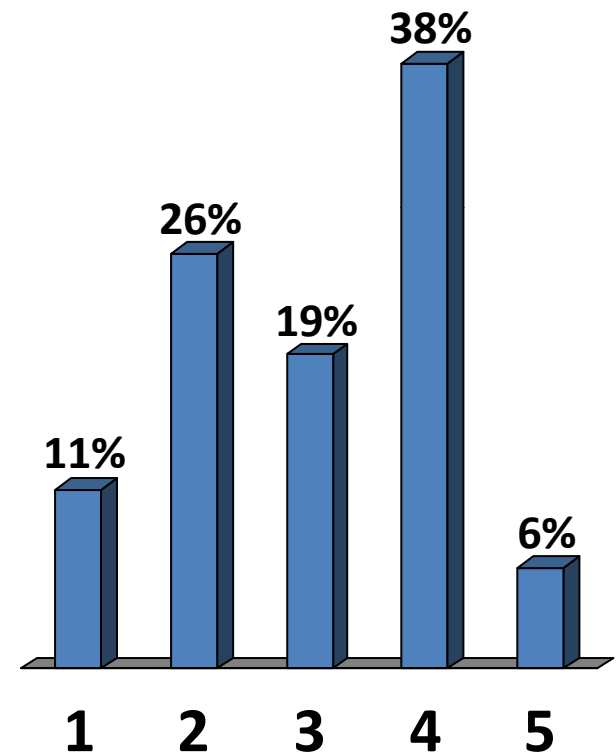
# **How much do you agree or disagree with the following statements about participation in research?**

## **Response Options Will Be:**

1. = Strongly Disagree
2. = Somewhat Disagree
3. = Neither Agree nor Disagree
4. = Somewhat Agree
5. = Strongly Agree

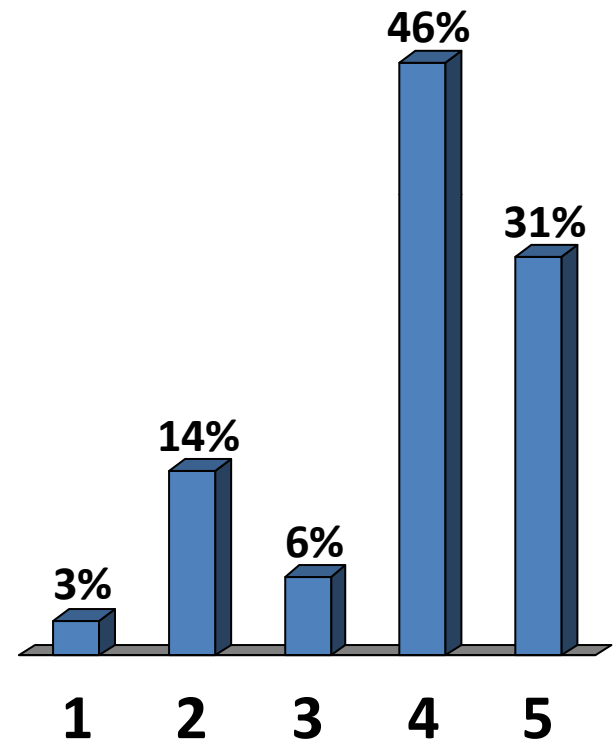
**African Americans and other minorities  
are less likely to participate in medical research  
because it is inconvenient**

1. = Strongly Disagree
2. = Somewhat Disagree
3. = Neither Agree nor Disagree
4. = Somewhat Agree
5. = Strongly Agree



**African Americans and other minorities  
are less likely to participate in medical research  
because they are not informed  
about research opportunities**

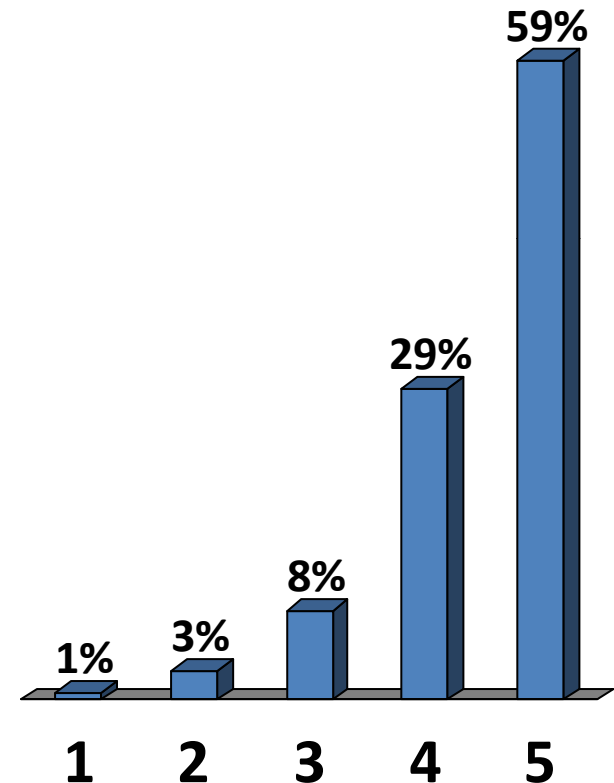
- 1. = Strongly Disagree
- 2. = Somewhat Disagree
- 3. = Neither Agree nor Disagree
- 4. = Somewhat Agree
- 5. = Strongly Agree





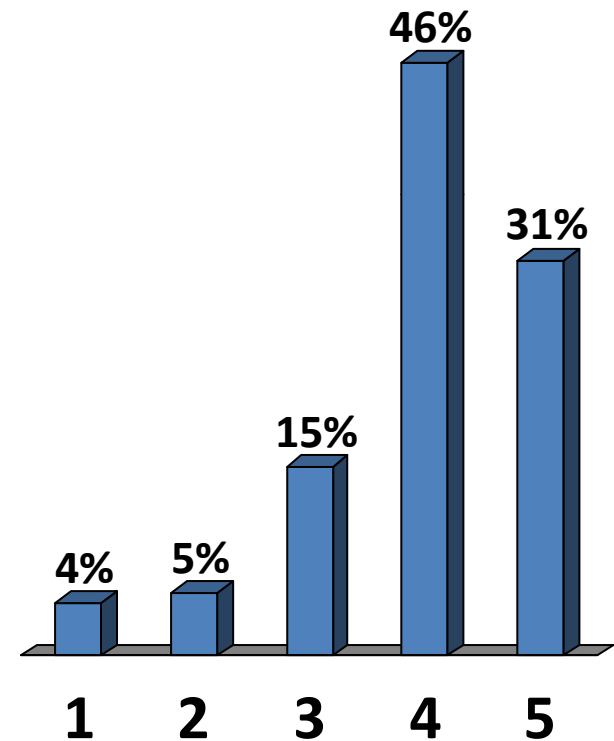
**African Americans and other minorities  
are less likely to participate in medical research  
because they do not trust people  
in the health care system**

1. = Strongly Disagree
2. = Somewhat Disagree
3. = Neither Agree nor Disagree
4. = Somewhat Agree
5. = Strongly Agree



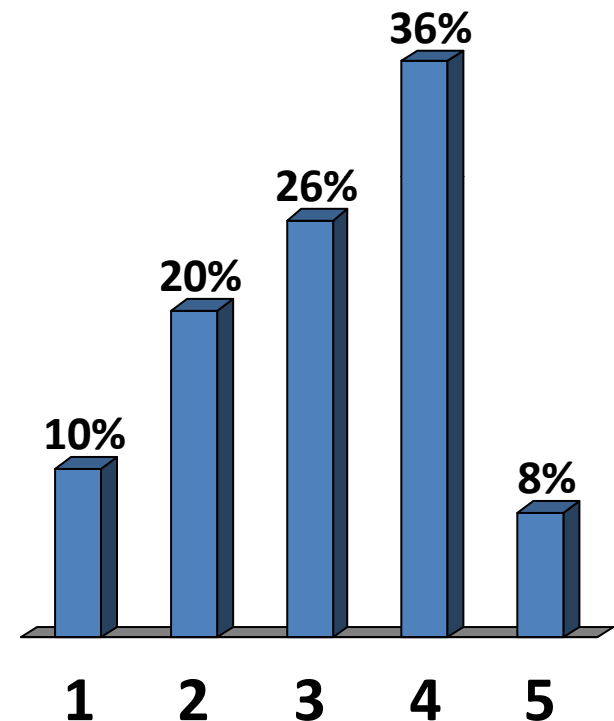
**African Americans and other minorities  
are less likely to participate in medical research  
because they are afraid it might harm them**

1. = Strongly Disagree
2. = Somewhat Disagree
3. = Neither Agree nor Disagree
4. = Somewhat Agree
5. = Strongly Agree



**African Americans and other minorities  
are less likely to participate in medical research  
because they do not want to find out  
if they have a health problem**

1. = Strongly Disagree
2. = Somewhat Disagree
3. = Neither Agree nor Disagree
4. = Somewhat Agree
5. = Strongly Agree



**African Americans and other minorities  
are less likely to participate in medical research  
because they are concerned they  
will not be treated with respect**

1. = Strongly Disagree
2. = Somewhat Disagree
3. = Neither Agree nor Disagree
4. = Somewhat Agree
5. = Strongly Agree

